

Poncho Jumper

MEASUREMENTS

		S	M	L
To Fit Bust	cm	75-80	85-90	95-100
Actual Size (at widest point)	cm	192	204	216
Length	cm	68	70	72
Sleeve Length (approx, from neck to cuff)	cm	80	82	84

MATERIALS

CLECKHEATON WOOL MOHAIR 12 PLY 50g balls

Quantity (0003 Stone)	S	M	L
	18	20	22

Use only the yarn specified. Other yarns are likely to produce different results.

Quantities are approximate as they can vary between knitters. Check the ball bands to ensure all yarn is from the same dye lot.

NEEDLES AND EXTRAS

- 1 pair 5.50mm (UK 5) knitting needles and one each 5.00mm (UK 6) and 5.50mm **circular** knitting needles (60cm long) or size needed to give correct tension.
- 1 stitch-holder.
- wool needle for sewing seams.

TENSION

This Poncho Jumper has been designed at a tension of 16.5 sts and 22 rows to 10cm over stocking st, using 5.50mm needles.

To work a tension square, using 5.50mm needles, cast on 25 sts. Work 34 rows stocking st. Cast off loosely.

Check your tension carefully.

If less sts to 10cm use smaller needles, if more sts use larger needles.

For abbreviations and more information on knitting techniques, please see cleckheaton.com.au

BACK

Using 5.50mm needles, cast on **81 (87-93)** sts.

Purl 1 row (wrong side).

Working in stocking st (beg with a knit row), inc one st at each end of next row, then in every foll alt row until there are **101 (107-113)** sts.

Tie a coloured thread at each end of last row.

Work 17 rows. ******

Beg Shaping –

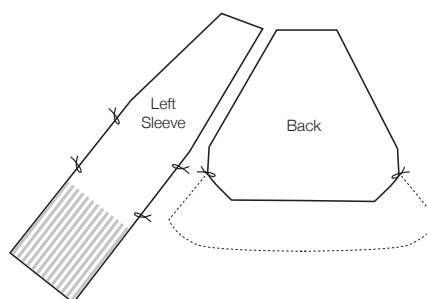
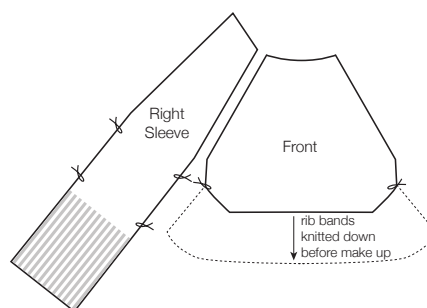
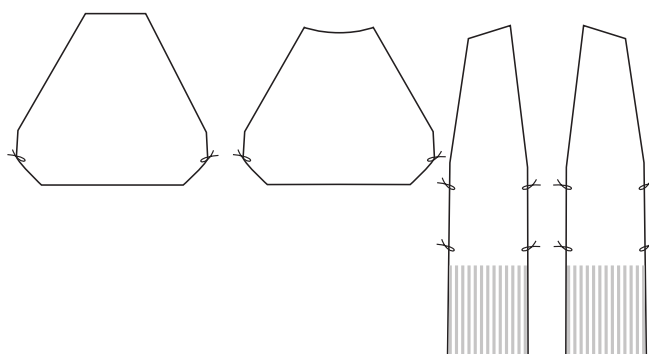
Next row – K2, K2tog, knit to last 4 sts, sl 1, K1, pssso, K2 ... **99 (105-111)** sts.

Dec one st (as before) at each end of every foll 4th row

1 (1-2) times, then in every foll alt row until **31 (33-35)** sts rem.

Work 1 row.

Cast off.



FRONT

Work as given for Back to **.

Beg Shaping –

Next row – K2, K2tog, knit to last 4 sts, sl 1, K1, pssso, K2 ... **99** (105-111) sts.

Dec one st (as before) at each end of every foll alt row until **39** (41-41) sts rem.

Work 1 row.

Shape Neck –

Next row – K2, K2tog, K8, **turn**.

Cont on these 11 sts for left side of neck.

Next row – Cast off 3 sts, purl to end.

Next row – (K2, K2tog) twice ... 6 sts.

Next row – Cast off 2 sts, purl to end.

Next row – K1, K3tog ... 2 sts.

Next row – P2.

Next row – K2tog. Fasten off.

Slip next **15** (17-17) sts onto stitch-holder and leave for polo collar.

With right side facing, join yarn to rem sts, knit to last 4 sts, sl 1, K1, pssso, K2.

Cont on these 11 sts for right side of neck.

Next row – Purl to last 2 sts, P2tog.

Next row – Cast off 3 sts, K3 *incl st rem on right-hand needle after casting off*, sl 1, K1, pssso, K2 ... 6 sts.

Next row – P4, P2tog.

Next row – Cast off 2 sts *one st rem on right-hand needle*, sl 1, K1, pssso ... 2 sts.

Next row – P2.

Next row – K2tog. Fasten off.

LEFT SLEEVE

Using 5.50mm needles, cast on **46** (50-54) sts.

1st row – K2, * P2, K2, rep from * to end.

2nd row – P2, * K2, P2, rep from * to end.

Last 2 rows form rib.

Cont in rib until cuff measures 22cm from beg, ending with a 2nd row.

Work 8 rows stocking st, beg with a knit row.

Tie a coloured thread at each end of last row to indicate end of sleeve seam.

Cont in stocking st until Sleeve measures 16cm from **coloured threads**, ending with a **knit** row.

Tie a 2nd coloured thread at each end of last row.

Work 17 rows.

Beg Shaping –

Next row – K2, K2tog, knit to last 4 sts, sl 1, K1, pssso, K2 ... **44** (48-52) sts.

Dec one st (as before) at each end of every foll 6th row until **36** (36-30) sts rem, then in every foll 8th row until **26** (28-28) sts rem. ***

Work 2 rows.

Shape Top –

Next row (wrong side) – Cast off **8** (9-9) sts, purl to end.

Next row – Knit to last 2 sts, K2tog.

Rep last 2 rows once.

Work 1 row. Cast off rem 8 sts.

RIGHT SLEEVE

Work as given for Left Sleeve to ***.

Work 3 rows.

Shape Top –

Next row (right side) – Cast off **8** (9-9) sts, knit to end.

Next row – Purl to last 2 sts, P2tog.

Rep last 2 rows once.

Cast off rem 8 sts.

BACK LOWER BAND

With right side facing, using 5.50mm **circular** knitting needle and beg at coloured thread, knit up **124** (128-132) sts evenly around lower edge of Back to other coloured thread.

1st row (wrong side) – P3, * K2, P2, rep from * to last st, P1.

2nd row – K3, * P2, K2, rep from * to last st, K1.

Rep last 2 rows 4 times (10 rows in all).

11th row (wrong side) – P3, * inc knitways in next st, K1, P2, rep from * to last st, P1 ... **154** (159-164) sts.

12th row – K3, * P3, K2, rep from * to last st, K1.

13th row – P3, * K3, P2, rep from * to last st, P1.

Rep last 2 rows until band measures 16cm from beg, working last row on wrong side.

Cast off **very loosely** in rib.

FRONT LOWER BAND

Work as given for Back Lower Band, working around lower edge of Front.

POLO COLLAR

Note – We recommend using mattress stitch to sew up your Poncho Jumper.

Join sleeve seams to first coloured thread. Placing bottom corner of lower band to end of sleeve seam and matching other sleeve threads to threads on Back and Front, sew in sleeves, noting that tops of sleeves form part of neckline (see diagram). With right side facing and using 5.00mm **circular** needle, beg at left back raglan seam, knit up **25** (27-30) sts evenly across top of left sleeve, knit up 8 sts evenly along left side of front neck, knit across sts from front stitch-holder, knit up 8 sts evenly along right side of front neck, knit up **25** (27-30) sts evenly across top of right sleeve, then knit up **31** (33-35) sts evenly across back neck ... **112** (120-128) sts.

1st round – * K2, P2, rep from * to end.

Rep last round until polo collar measures 10cm from beg.

Change to 5.50mm **circular** needle and cont in rib until polo collar measures 27cm from beg.

Cast off **very loosely** in rib.

TO MAKE UP

DO NOT PRESS. Fold Polo Collar to right side, as pictured.

HOTLINE

For Australian residents – If you need help with your pattern, and are using the recommended Cleckheaton yarn, please phone 03 9380 3888 or Toll Free 1800 337 032, (9am to 4pm Mon - Fri E.S.T.) If you live outside Australia, please see our postal address and website details.

Cleckheaton

Level 7, 409 St Kilda Road, Melbourne, VIC 3004

A.B.N 85 055 366 590

T +61 3 9380 3888 F +61 3 9820 0989

cleckheaton.com.au

 /auspinners

This publication is protected by copyright. Reproduction in any form (including photocopying) without prior permission from Australian Country Spinners will lead to proceedings being brought to restrain any infringement. We have made every effort to ensure that these instructions are accurate and complete. We cannot however be responsible for variations in individual work, human error, typographical mistakes or if yarn other than the recommended CLECKHEATON yarn is used. Yarn colours shown may vary slightly due to the printing process and different monitor settings.